

ORBIS

The adjustable circular formwork with or without tie rods

...simplicity to shape the concrete



Schalsysteme · Formwork systems

Circular formwork ORBIS

The circular formwork ORBIS, designed and built by Interfama, is a special formwork for all round wall works such as: storage tanks, silo towers or driveways.



On time delivery



Safe and quickly with transport kit



The elements are adjusted by means of a spindle in the radius (min. 3.0 meters)

Features

- ✓ The same element (width 110 cm) for internal and external formwork
- ✓ Fast connection with panel clamp
- ✓ Forming without tension points
- ✓ Setting radius of 3.0 meters to infinity
- ✓ Easy and quickly stacking
- ✓ Safe transport by Transport Kit
- ✓ Combined with straight formwork systems

The circular formwork ORBIS is developed and built for maximum pressure of fresh concrete **60 kN/m²**.

The elements consists of a central framework, two lateral outdoor profiles G7000 and the Finnish birch plywood - 18 mm thickness - the surface is sealed with phenolic coating 220 g/m². As an option is available the plywood with polypropylene coating.

- ✓ Connecting horizontal and vertical, with only a hammer blow
- ✓ Closing the circle without any special elements

The connection between the elements, horizontal and vertical, made with the panel clamp or with the adjustable clamp to compensation.



Panel clamp

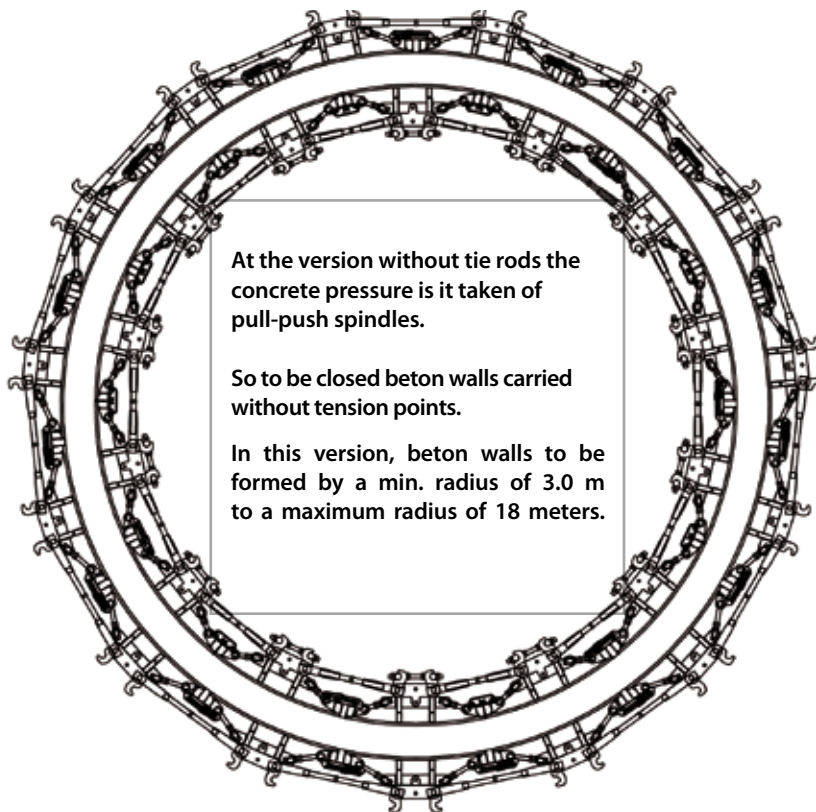


Adjustable clamp

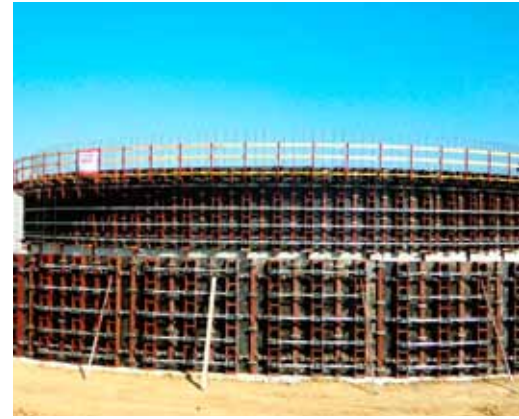
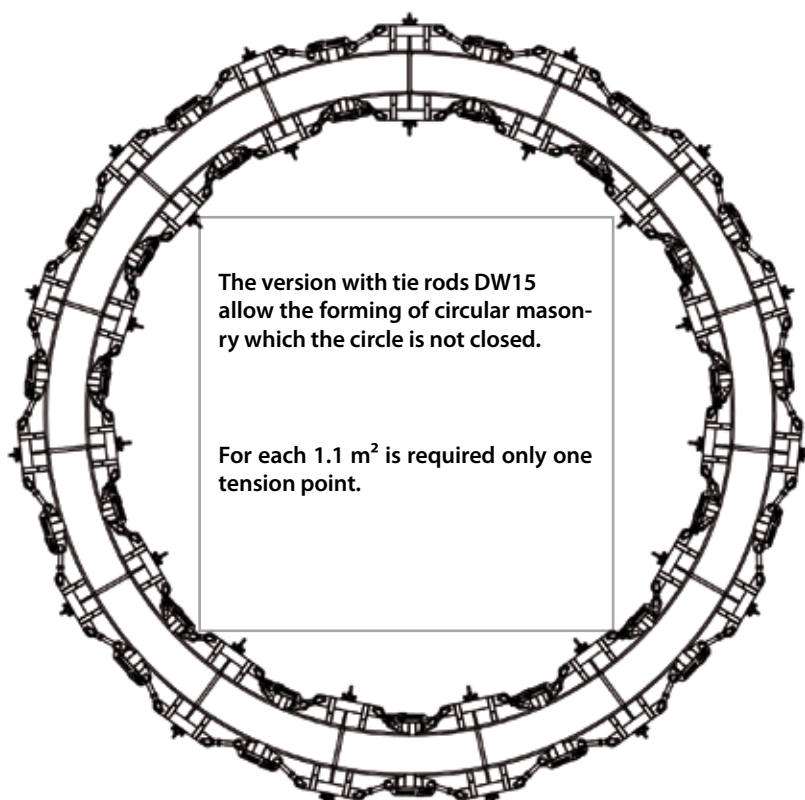


The circular formwork ORBIS can be used with two versions:

Version without tie rods



Version with tie rods



- ✓ Various applications
- ✓ Easy and quickly adaptation
- ✓ Opportunity for horizontal use (tunnel construction)
- ✓ Combined with the climbing systems
- ✓ Combined with the support systems



Implants Biogas - FACCHETTI COSTRUZIONI SPA

- ✓ Easy to adjust the radius
- ✓ Adjustable formwork with plywood
- ✓ Few and easy elements
- ✓ Simply stacking up with the stacking clamp

Indications: possibility of technical variations. The photographs in this catalogue show operational building sites and are therefore incomplete with regard to safety regulations.

Brochure ORBIS Edition 08/2011
© Copyright by Interfama GmbH

INTERFAMA G.m.b.H.
Kiefernainweg 138 - Industriezone
I-39026 Prad am Stilfserjoch (BZ)
Tel +39 0473 618295 - Fax +39 0473 618287
E-mail: info@interfama.com - www.interfama.com